

959 Mearns Road
 Warminster, PA 18974
www.TeikokuPumps.com
 ☎ 215-343-6000
 ☎ 267-486-1037

5880 Bingle Road
 Houston, TX 77092
www.TeikokuPumps.com
 ☎ 713-983-9901
 ☎ 713-983-9919

St. Rt. 2 North
 Belmont, WV 26134
www.TeikokuPumps.com
 ☎ 304-684-2459
 ☎ 304-684-7593

Proposal

Date 7-30-2014	Quote No. 2014-18291 Rv2	Inquiry No.	Project Name	Terms (in US Currency) Net 30	
To:			Representative for Teikoku USA, Inc.		
Address:			Travis Munn Superior Industrial Equipment		
Country:			1609 Afton Road Sycamore, Illinois 60178		
Phone:			United States 815-899-8900		
Fax:			815-899-8898		
Email:			tmunn@superiorpumps.com		
Rick Vondra Patriot Renewable Fuels, LLC P.O. Box 560 Annawan, Illinois 61234 United States 309-935-5700 rvondra@patriotethanol.com					
We promise to furnish the equipment listed below at the price shown subject to Teikoku USA's Conditions of Sale. FOB Factory					
Item No.	Equip No.	Quantity	Pump Model	Unit Price	Total Price
13	P-703	1	F60-3315N4BL-0204TF1-AV	\$6,183.45	\$6,183.45
Application Data:		Materials of Construction:		Motor Data:	
Fluid:	Methanol	Pump Case:	316 SS	Insulation:	H
TDH (feet):	180.0	Impeller:	316 SS	Frame:	3315
Capacity (GPM):	15.0	Gaskets/O-rings:	PTFE	Stator Fill:	None
Specific Gravity:	0.818	Rotor Liner:	316L SS	Voltage:	460
Viscosity (cps):	0.4015	Stator Liner:	Hast C	Phase:	3
Op. Temp. (F):	131.0	Brg. Hsg./Adapter:	316 SS	Hertz:	60
Vapor Press. (psia):		Shaft:	316 SS	RPM:	3450
Sp. Ht. (BTU/lbmF):		Bearings:	Carbon Graphite	Design Power (HP)	2.84
Suct. Press. (psig):		Journal/Sleeves:	316 SS Hard Chrome	Runout Power (HP):	6.47
Dsch. Press. (psig):		Suct. Conn:	1.5 / 150# RF	Motor Rating (HP):	16.6
Diff. Press. (psi):	63.7	Dsch. Conn.:	1.0 / 150# RF	F.L. Amp:	24.0
NPSHAvail. (feet):	16.36	Case Drain:	1/2 in. NPT	F.L. KW:	12.4
NPSHReq. (feet):	4.94	Circ. Assy.:	None	Start KVA:	76.16
Eff. @ Diam. (%):	22.5	Circulation Path:	Internal	Motor Rating:	TELC
Imp. Diam. (in):	6.75	Net Wgt. (lbs):	264	Area Class:	Class 1, Group D, Div 2
Design Pressure	150 psi				
Options:				Thermal TCO (F):	356
Standard TRG bearing wear monitor included.				Perf. Curve No.:	
				Bulletin Number:	
				Outline Dwg.:	
				Shipment:	2 Weeks
				(wks) after drwg. approval or mfg. release.	
Comments:					

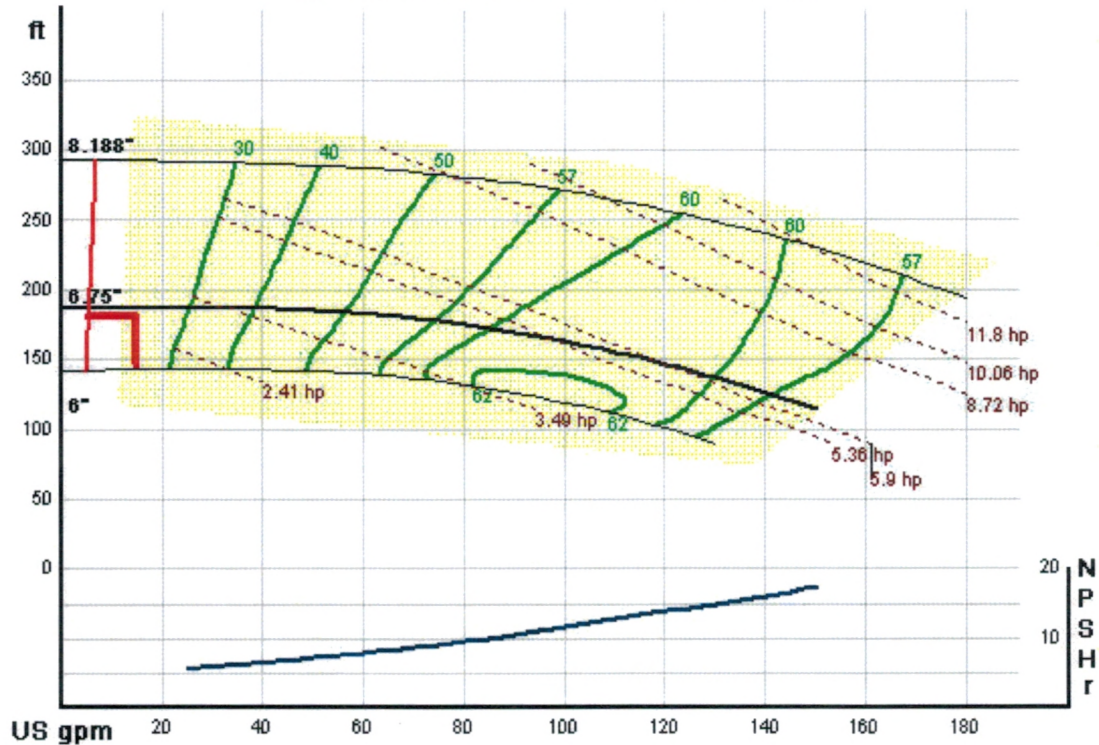
Thank you for your inquiry.
 Please feel free to visit our website at: www.TeikokuPumps.com
 Abhilash Abraham/AE x 2847

959 Mearns Road
 Warminster, PA 18974
www.TeikokuPumps.com
 ☎ 215-343-6000
 ☎ 267-486-1037

5880 Bingle Road
 Houston, TX 77092
www.TeikokuPumps.com
 ☎ 713-983-9901
 ☎ 713-983-9919

St. Rt. 2 North
 Belmont, WV 26134
www.TeikokuPumps.com
 ☎ 304-684-2459
 ☎ 304-684-7593

Pump Data Sheet
Equipment Number: P-703
Service: Feed Pump (P-101)
Quote Number: 2014-18291 Rv2



Pump Properties

Model = F60-3315N4BL-0204TF1-AV
 Frame Size =
 Suction = 1.5
 Discharge = 1.0
 Frame = 3315

Application Properties

Flow = 15.0 (GPM)
 Head = 180.0 (feet)
 Speed = 3450 (RPM)
 Diameter = 6.75 (in)
 Power = 2.84 (hp)
 NPSHr = 4.94 (feet)
 Minimum Flow = 5.55 (GPM)

Pump Drawings

[Outline Link](#)

[Cross Section Link](#)